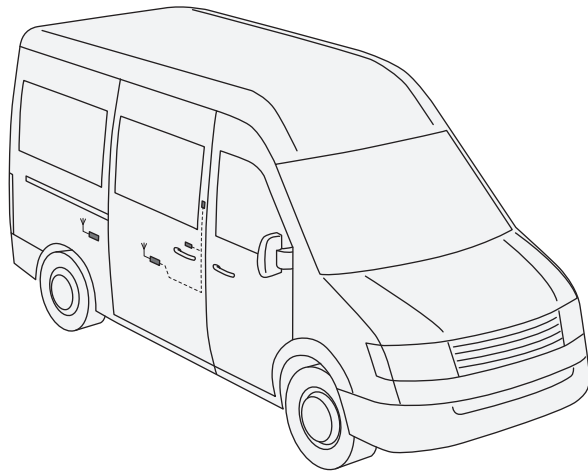




# MANUAL

## DRIVE CONTROL MODULE OF MERCEDES 2 DOOR HANDLES



MERCEDES SPRINTER (907)

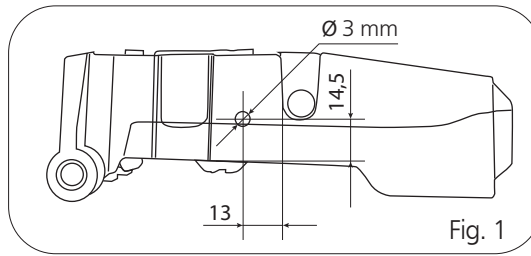
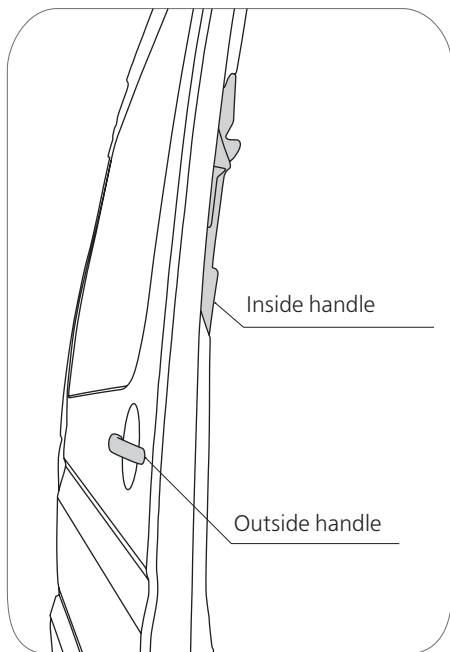


Fig. 1

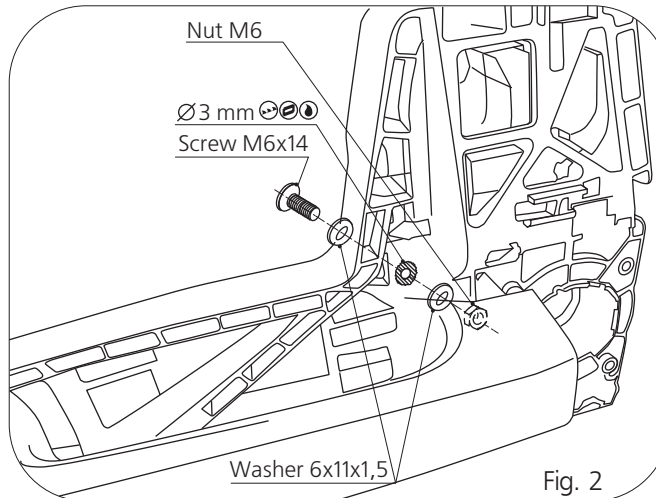


Fig. 2

Detach the outside handle of the sliding door. Drill a hole  $\varnothing 3$  mm, as shown fig. 1. Screw up the ajar switch bracket with the screw M3x5, as shown in fig. 3 and with screw M6x14, as shown in fig. 2.

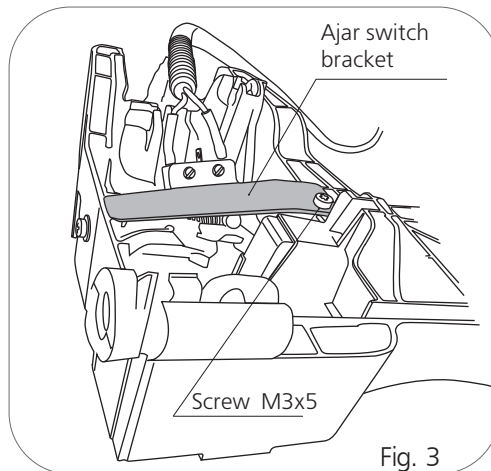


Fig. 3

Put the handle back.

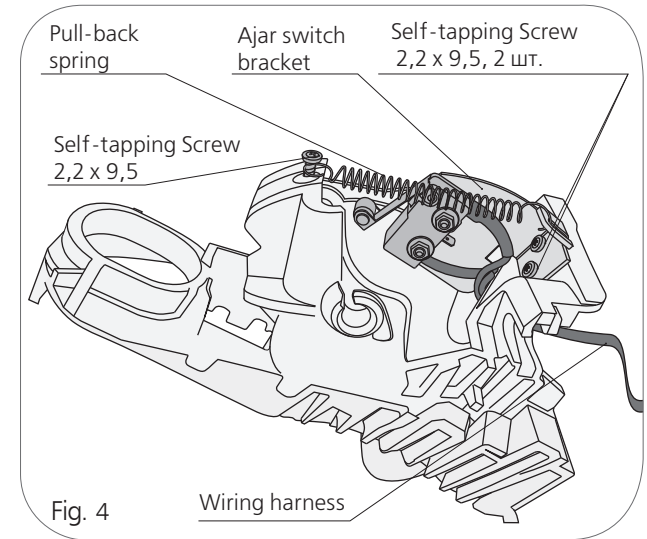


Fig. 4

Detach the inside handle of the sliding door. Screw up the ajar switch bracket on it with two self-tapping screws 2.2 x 9.5 and screw in a self-tapping screw 2.2 x 9.5 to fix the pull-back spring, as shown in Fig. 4.

Connect the wiring harness to the contacts of the ajar switch, as shown in Fig. 4. Place the handle back.

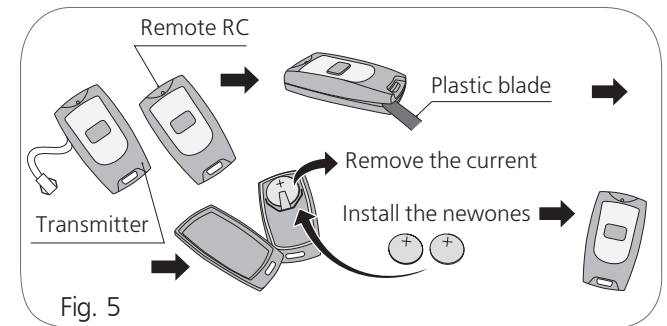


Fig. 5

The drive control module is equipped with an optional remote control RC to illustrate how to control the drive remotely.

Replace the batteries in the transmitters and remote control with new ones before you start operation. Two batteries CR2016 3V are needed. Change the batteries according to Fig. 5.

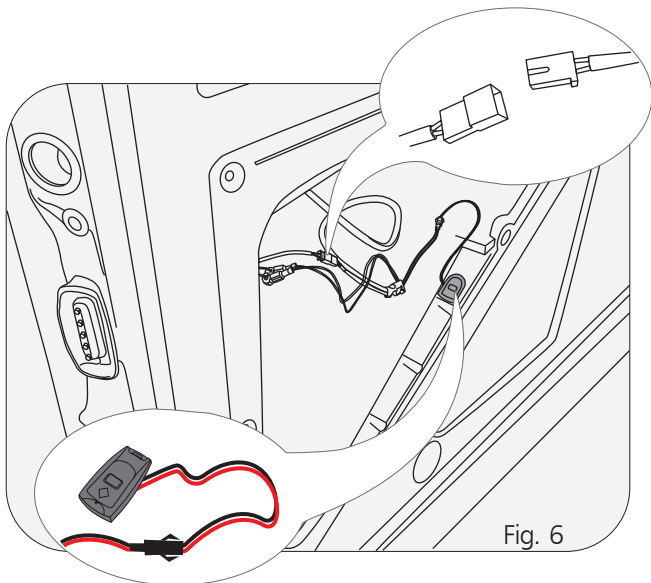
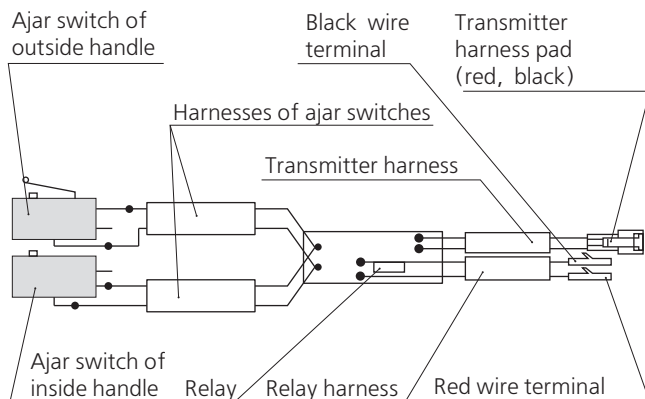


Fig. 6

In the indicated place in fig. 6 fix the transmitter of the control module with bi-adhesive 3M. Pull the ajar switch wires towards it and connect the pads.



Connect the transmitter harness to the transmitter, as shown in fig. 5, whereas the relay harness to the standard block contacts harness of the door lock, as shown in fig. 7. Connect the set-in contacts to two current wires blue-black и blue-brown, of the standard blocking of the door lock, as shown in fig. 7c. Connect two terminals of Red и Black wires of the relay harness to the set-in contacts, as shown in fig. 7d.

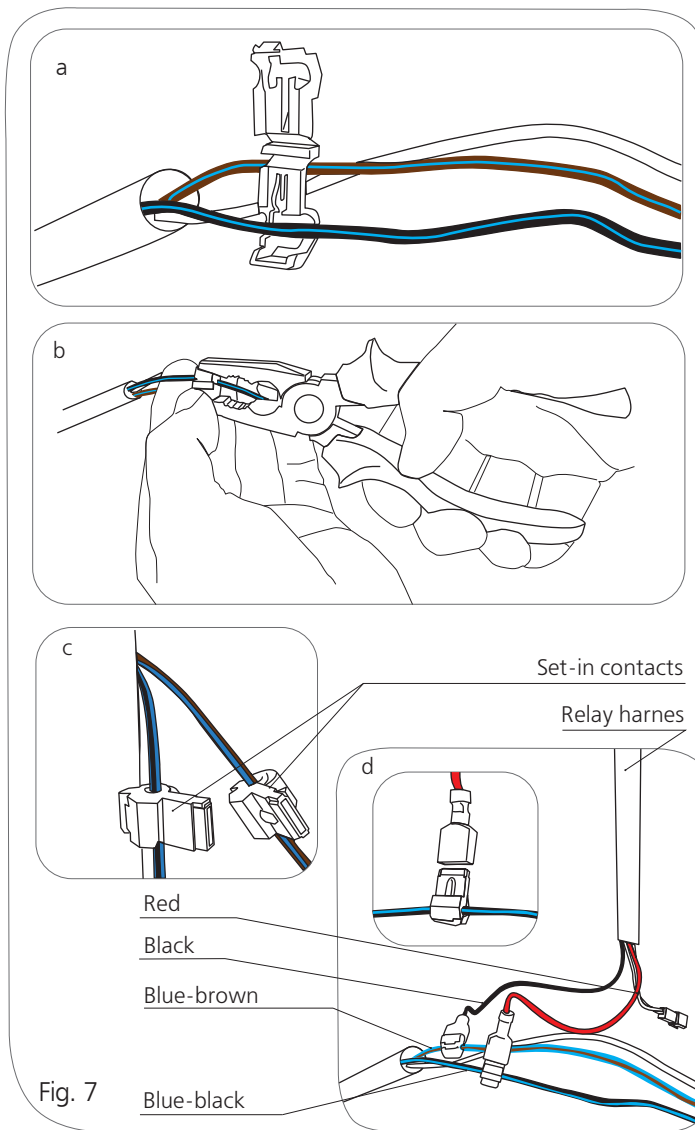


Fig. 7

**⚠ ATTENTION ⚠**

Provided that all wires connected correctly, the led lamp in transmitter should flash up and go out. To do this, it is necessary to pull any of the handles. When standard blocking of the door lock is switched on, the led lamp in the transmitter must not flash up if you pull the handle outside.

Connect receiver with controller in accordance with the drive in use: for Tros drive (fig. 8), for Kroko drive to controllers 101, 102 (fig. 9), 107 (fig. 10), for Cayman drive (fig. 11).

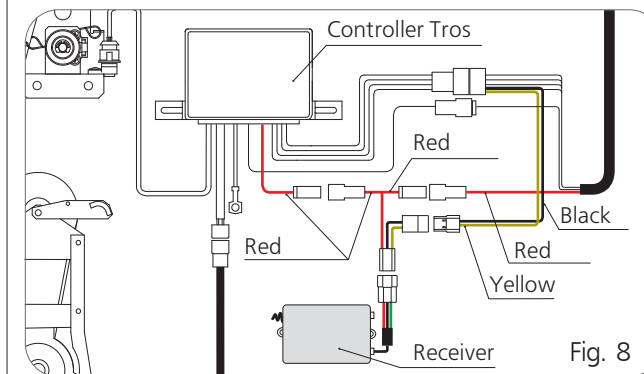


Fig. 8

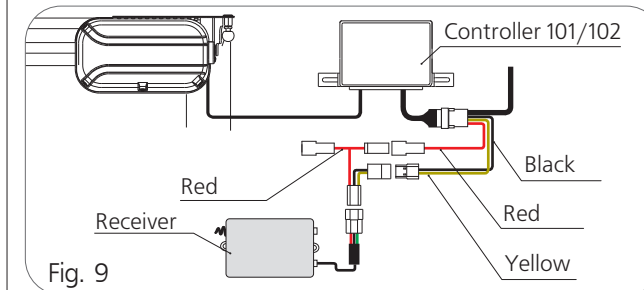


Fig. 9

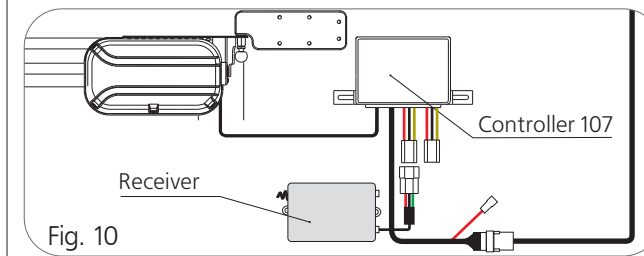


Fig. 10

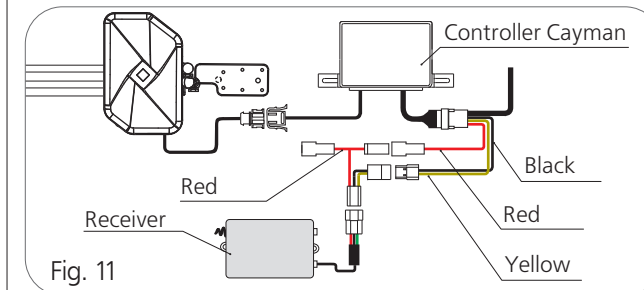


Fig. 11